

The Manor House & Gardens

at Lee

from 1772

1772 House built as a private residence by Thomas Lucas, a wealthy merchant and treasurer of Guy's Hospital, on the site of a mediaeval farmhouse.



c1773 Garden laid out, lake made and ice house built.



Part of the ice house after it was restored in 2000.

1796 Sir Francis Baring bought the house and grounds from Mrs Angerstein, formerly Mrs Lucas. He then bought the Manor of Lee and the house became the Manor House.

1810 Sir Francis Baring died. The estate was inherited by his son Sir Thomas Baring. He leased the house and gardens to private tenants.



1848 Sir Francis Thornhill Baring, (1796 - 1866) 1st Baron Northbrook, Chancellor of the Exchequer and grandson of Sir Francis Baring, was very generous with gifts of land for schools and churches in the community.



1884 Group photograph of Mr H C A Wolfram's Military 'crammer' School in front of the extension, demolished in 1901. Below Photograph of the gardens from the boathouse.



c1902 Earliest known photograph of The Gardens in use by the public.



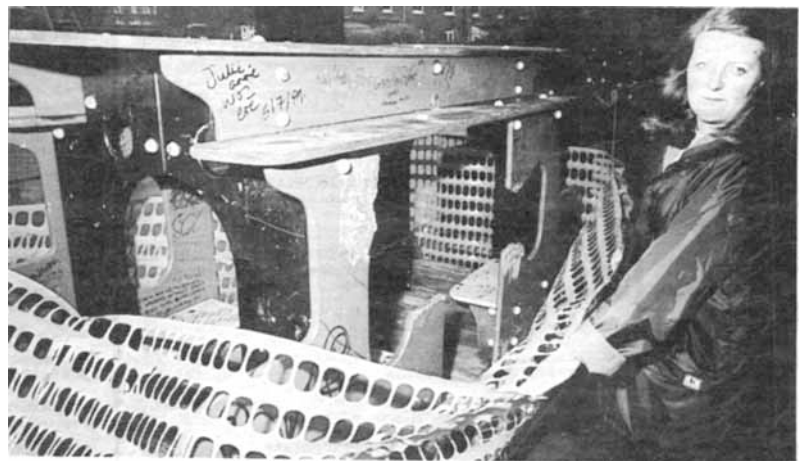
c1904 View of the island and lake.



c1936 View of the Manor House from the Gardens.



c1957 Uniformed LCC Park Keeper.



1990 Children's playground and other areas in the Gardens had fallen into serious decline.

1993 Local residents form Manor House Gardens User Group.



1997 Presentation by Heritage Lottery Fund to User Group after successful bid for funding to restore Gardens.



Saturday 18 May 2002 Opening of the new bridge across the Quaggy as part of the first centenary of public ownership celebrations. In November, the Gardens were granted the Green Flag Award.

1750			1800			1850			1900			1950			2000		
P			R			I			V			A			T		
E			O			W			N			E			R		
S			H			I			P			P			U		
B			L			I			C			O			W		
N			E			R			S			H			I		
P			O			W			N			E			R		
S			H			I			P			U			B		
L			I			C			O			W			N		
E			R			S			H			I			P		
1750			1800			1850			1900			1950			2000		

1784 Mr Lucas died. The property was inherited by Mrs Lucas.



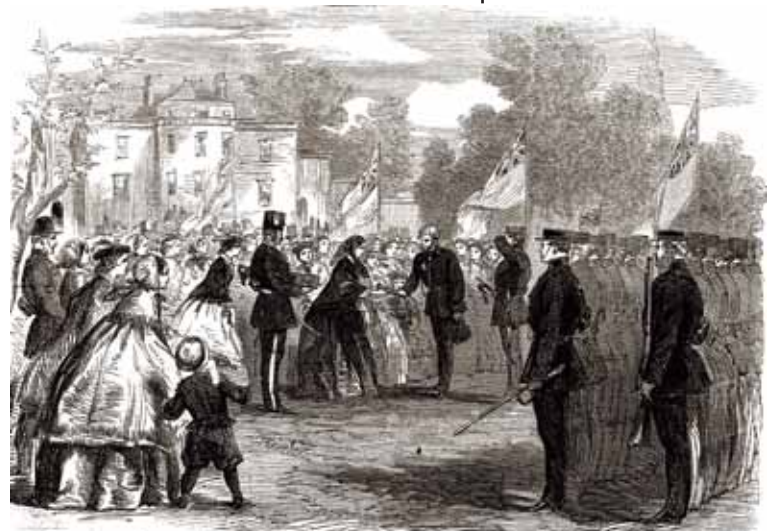
1790 Portrait of the former Mrs Lucas by Sir Joshua Reynolds, after her marriage to Mr Julius Angerstein.



1834 Watercolour painting by Copley Fielding.

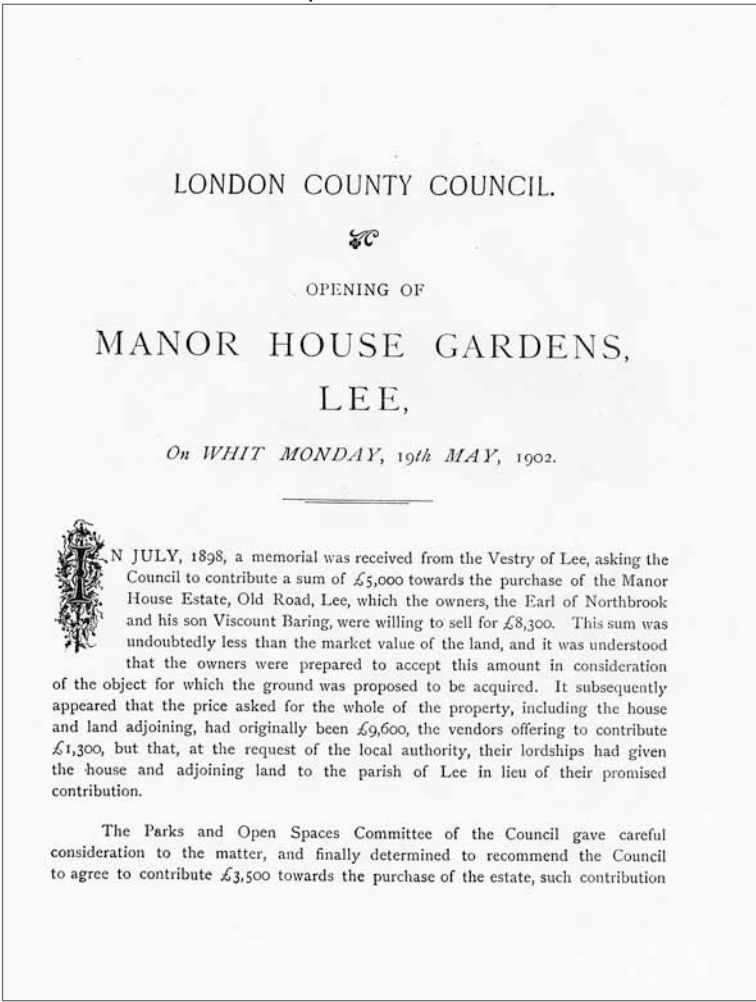


c1797 An extensive system of elaborate greenhouses was planned. Not all were built. This one was for growing pineapples.



Saturday 16 June 1860 Presentation of a silver bugle by the ladies of Blackheath and Lee to Captain H B Farnall, commanding the 3rd Company of Kent Volunteer Rifles. Capt & Mrs Farnall were residents in the Manor House.

1898 The 1st Earl of Northbrook sold the Manor House and grounds to the London County Council for £8,835 18s 4d. The estate was in a 'somewhat neglected condition' but was restored by the LCC.



Whit Monday 19 May 1902 First page of a booklet produced to commemorate the opening of the Gardens to the public. The Manor House was opened as a library in November of the same year. In 2000, ninety eight years on, local residents formed Friends and Users of Manor House Library.

Tuesday 24 June 1941 At a meeting of the Civil Defence Emergency Committee, Lewisham Council closes one of the three air raid shelters in the Gardens. Construction was sub standard and the shelter dangerous.



May 1966 View of the Manor House from the lake.

1976 Lee Manor Society formed by local residents for Conservation Area.



1949 Local family on the lawn by the lake.



Friday 16 October 1987 Hurricane destroyed many trees.

2003 Lewisham Council submits an application to the Heritage Lottery Fund to restore and expand the Manor House.



June 2000 Official opening after restoration of The Gardens completed. Bridget Prentice MP (right), Lord Ashburton, Carolyn Bosworth-Davies (left) with her daughter, Robyn. Below Part of the children's playground and the lawn during the opening day celebrations.



Grateful acknowledgement is made to the following sources for material used:

CAPTIONS The Manor House, Lee and Its Associations, Edwyn & Josephine Bechenough 2nd ed. London Borough of Lewisham, 1971; Manor House Gardens Landscape Strategy, Land Use Consultants, 1995; The Manor House Public Consultation Report, London Borough of Lewisham, 2002.
ILLUSTRATIONS AND PHOTOGRAPHS Musée du Louvre, Paris. Photo RMN, 1790. By Courtesy of The National Portrait Gallery, London 1790. Lewisham Local Studies & Archives c1797 1834 1848 1860 1884 1902 c1902 c1904 c1936 Mrs J Cooks. 1949 Mr G Whitbread, c1957 Mr R Woods. 1966 The Mercury 1990 1997 London Borough of Lewisham. 2000 Mrs J Cole. 1987 2002.

History & wildlife in the Manor House & Gardens at Lee



Some examples of the wildlife that may be seen in the Gardens



Great Spotted Woodpecker



Bumble Bee



Park Rangers' Office & Information



Toilets



Café & Refreshments



The Ice House (Open first and third Sundays April - September or enquire at the Park Rangers' Office)



Childrens' Play Area



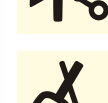
Flower Garden



Ornamental Pond & Wildlife Habitat



Tennis Courts



Multi-Purpose Sports Pitch



Entrance & Exit Points



Dog Exercise Area



Dog Free Areas



Migrant Hawker Dragonfly



The Manor House Library

Old Road



Common Oak



Lime



Meadow Buttercup



Plane



Cypress



Horse Chestnut



Water-lilies



Weeping Willow



Great Tit



Moorhen



Tufted Duck



Rose-ringed Parakeet



Southern Hawker Dragonfly



Canada Goose



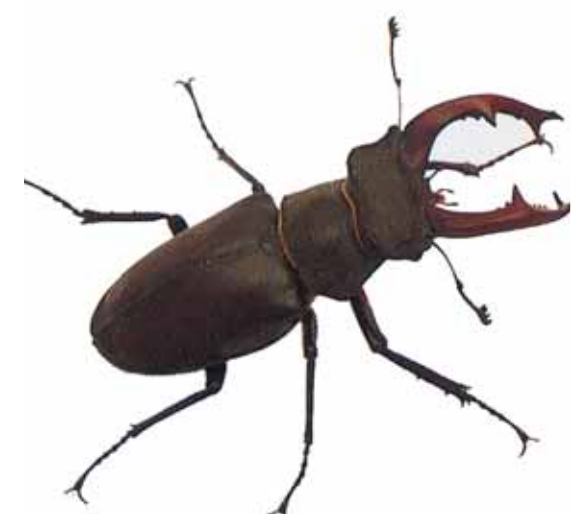
Yellow Iris



Lesser Reedmace



Mallard Duck



Stag Beetle



Red Admiral



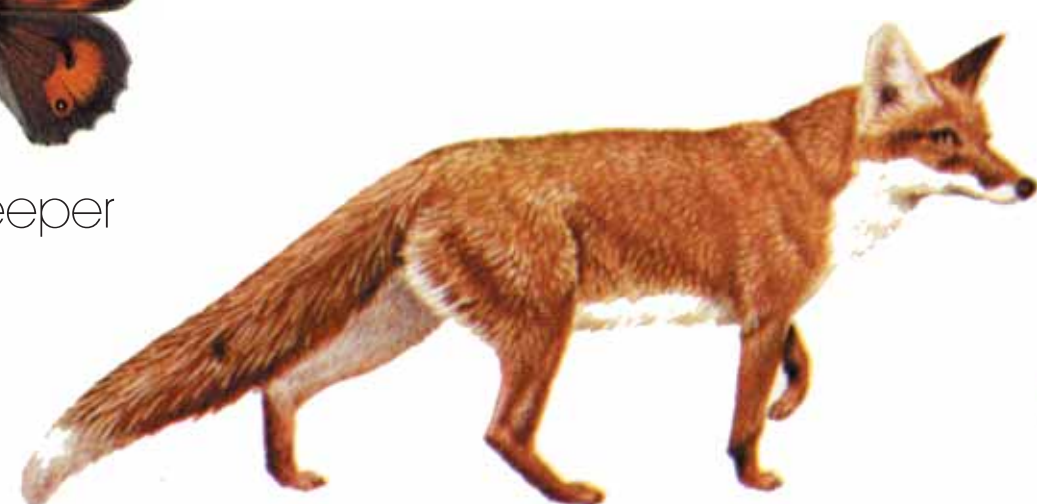
Kingfisher



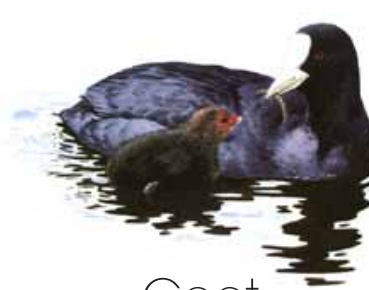
Common Mallow



Gatekeeper



Fox



Coot



Small White



Heron



Goldfish



Ox-eye Daisy



Great Diving Beetle

Manor Lane

Manor Lane

Brightfield Road

Taunton Road

Blue-tailed Damselfly

0m 5m 25m 50m
1m 10m

Grateful acknowledgement is made to the following sources for material used:

Lewisham Local Studies & Archives Water colour of the Manor House 1834 by Copsey Fielding front cover, FSC Publications Guide to the Butterflies of Britain © Richard Lewington 1998, Red Admiral, Gatekeeper, Small White, Painted Lady, by permission of the Reader's Digest Association AA Book of The British Countryside © 1973, Fox, Bumble Bee, Great Diving Beetle, Common Oak, Lime, Plane, Horse Chestnut, Cypress, Weeping Willow, Stag Beetle, London Borough of Lewisham, Diagrammatic map of Manor House Gardens, Migrant Hawker Dragonfly, Southern Hawker Dragonfly, Blue-tailed Damselfly, Common Reed, Yellow Iris, Lesser Reedmace, Mallard Duck, Coot, Moorhen, Canada Goose, Tufted Duck, Water-lilies, London 2000, Marjorie Blamey and Christopher Grey-Wilson Cassell's Wild Flowers of Britain and Northern Europe, Cassell's 2003, Common Mallow, Meadow Buttercup, Ox-eye Daisy, Mark Evans How to Look After Your Pet Fish Goldfish, copyright Dorling Kindersley, London 1993, Illustrations from The Kingfisher Field Guide to the Birds of Britain and Europe copyright © Alan Harris 1993. Reproduced by permission of Kingfisher Publications Plc, all rights reserved, Great Spotted Woodpecker, Wren, Great Tit, Heron, Rose-ringed Parakeet.